



Contents

Faculty & Deans	1
Visitors & Lecturers	10
Teaching Fellows	12
Librarians	12
Library Staff	13
Administrative Staff	14
Students	
Advanced Degree Students	17
Class of 1996	19
Class of 1997	26
Class of 1998	33
Nonmatriculated Students	39
Maps	40

Cover design: Ann Dethlefsen, Nancy Singer

Desktop production: Dianna Henderson

Cover photos: Amy Applebaum, Gloria Pyszka, John Sheretz, Visual Art Services, Marco Zecchin

NOTE: This roster is based on information available as of August 31, 1995. Changes and additions since that date may not appear. Questions about the information printed in this publication should be directed to: Kelley Garcia, Academic Affairs (Faculty & Deans, Visitors & Lecturers, Teaching Fellows sections); Ruth Friend, Library (Librarians, Library Staff sections); Yvette Sloan, Personnel (Administrative Staff section); Registrar's Office (student sections).

Faculty & Deans



JANET COOPER ALEXANDER
Professor of Law

B.A., Swarthmore, 1968; M.A. (English), 1973, doctoral studies (English), 1968–71, Stanford; J.D., University of California at Berkeley, 1978 (head articles editor, *California Law Review*). Clerk to Judge Shirley M. Hufstедler, U.S. Court of Appeals, Ninth Circuit, 1978–79; to Justice Marshall, U.S. Supreme Court,

1979–80. Private practice, Califano, Ross & Heineman, Washington, D.C., 1980–82; Morrison & Foerster, San Francisco, 1982–87 (partner from 1984). Member of the Stanford faculty since 1987. Principal subjects: civil procedure, and federal jurisdiction.



BARBARA A. BABCOCK
Ernest W. McFarland Professor of Law

A.B., University of Pennsylvania, 1960; LL.B., Yale, 1963 (*Yale Law Journal*); LL.D. (hon.), University of San Diego, 1983; University of Puget Sound, 1988. Clerk to Judge Henry Edgerton, U.S. Court of Appeals, District of Columbia Circuit, 1963–64. Associate in the law firm of Edward Bennett Williams, 1964–66. Staff

attorney, Legal Aid Agency for the District of Columbia, 1966–68; director, Public Defender Service for the District of Columbia, 1968–72. Member of the Stanford faculty since 1972. Assistant Attorney General, Civil Division, U.S. Department of Justice, 1977–79. Principal subjects: civil procedure, and criminal procedure.



JOSEPH M. BANKMAN
*Professor of Law and
Helen L. Crocker Faculty Scholar*

A.B., UC–Berkeley, 1977; J.D., Yale, 1980. Associate, Tuttle & Taylor, Los Angeles, 1980–84. Assistant professor, University of Southern California, 1984–86; associate professor, 1986–89. Visiting associate professor, Stanford, 1988–89; professor, 1989—; Crocker Faculty Scholar,

1992—. Principal subjects: taxation, and criminal law.



JOHN H. BARTON
George E. Osborne Professor of Law

B.S., Marquette, 1958; J.D., Stanford, 1968 (*Stanford Law Review*). Member of the Stanford faculty since 1969; co-director, Center for Law and Technology Policy, 1988—. Visiting professor, University of Michigan, 1981; Harvard, 1988. Fellow, American Association for the Advancement of Science, 1992.

Chair, National Genetic Resources Advisory Council, 1992—; member, IUCN Commission on Environmental Law. Principal subjects: international business transactions, law and high technology, and international environmental law.



WILLIAM F. BAXTER
*Wm. Benjamin Scott and Luna
M. Scott Professor of Law (Emeritus)*

A.B., Stanford, 1951, J.D., 1956 (comment editor, *Stanford Law Review*). Member of the Stanford faculty, 1956–58, 1960—. Private practice in Washington, D.C., 1958–60. Visiting professor, Yale, 1964–65. Fellow, Center for

Advanced Study in the Behavioral Sciences, 1972–73. Assistant Attorney General, Antitrust Division, U.S. Department of Justice, 1981–83. Of counsel, Shearman & Sterling, 1984—. Principal subjects: antitrust, regulated industries, and intellectual property.



SUSAN S. BELL
Associate Dean, External Relations

B.A., Duke University, 1984. Director of research, Office of Foundation Relations, Northwestern University, 1984–85. Assistant director, Development and Alumni Relations, Northwestern School of Law, 1985–87; director, Development, 1987–1990. Director, Major Gifts/Centennial Campaign, Sierra

Club, 1990–92. Associate dean, Stanford, 1992—.



PAUL BREST
*Richard E. Lang Professor of Law
and Dean*

A.B., Swarthmore College, 1962; LL.B., Harvard, 1965 (Supreme Court and developments note editor, *Harvard Law Review*); LL.D. (hon.), Northeastern, 1980, Swarthmore, 1991. Clerk to Judge Bailey Aldrich, U.S. Court of Appeals, First Circuit, 1965–66; attorney, NAACP Legal

Defense Fund, Mississippi, 1966–68; clerk to Justice Harlan, U.S. Supreme Court, 1968–69. Member of the Stanford faculty since 1969 (Kenneth and Harle Montgomery Professor of Public Interest Law, 1983–87); dean, 1987—. Visiting profes-

... Faculty & Deans

sor, Yale, 1977–78. Fellow, Center for Advanced Study in the Behavioral Sciences, 1983–84. Fellow, American Academy of Arts and Sciences. Principal subjects: constitutional law, and problem solving and decisionmaking.



FRANK F. BRUCATO
Associate Dean, Administration

B.A., California State University at San Jose, 1983. Accountant, D. Bradburn & Co., Monterey, 1983. Assistant financial manager, Stanford Law School, 1983–84; manager, financial services, 1984–89; acting associate dean, 1988, 1989; associate dean, 1990—.



THOMAS J. CAMPBELL
Professor of Law

B.A., M.A., University of Chicago, 1973; J.D., Harvard, 1976 (editor, *Harvard Law Review*); Ph.D. (economics), University of Chicago, 1980. Clerk to Judge George E. MacKinnon, U.S. Court of Appeals, 1976–77; to Justice White, U.S. Supreme Court, 1977–78. Private practice with Winston & Strawn,

Chicago, 1978–80. White House Fellow, Office of Chief of Staff, 1980–81; executive assistant to U.S. Deputy Attorney General, 1981; director, Bureau of Competition, U.S. Federal Trade Commission, 1981–83. Member of the Stanford faculty since 1983. Member, U.S. Congress, 1989–93; California State Senate, 1993—. Principal subjects: antitrust, economic analysis of legal issues, and international law. (On leave, Spring 1996.)



MAURO CAPPELLETTI
Lewis Talbot and Nadine Hearn Shelton Professor of International Legal Studies

J.D., University of Florence, 1952; *libera docenza*, 1956; Dr. h.c., University of Aix-Marseille, 1976, Ghent, 1979, etc. Clerk to the president of the Italian bar and practicing attorney, 1952–55. Research fellow, University of Freiburg, 1955–57. Faculty, University of Macerata,

1957–62; professor, University of Florence, 1962—; also director, Florence Center of Comparative Judicial Studies. Concurrently professor at Stanford, 1970—; European University Institute, 1976–87 (chair, EUI Law Department, 1977–79, 1983, 1985–86). Visiting professor, Stanford, 1968; Harvard, 1969; University of California at Berkeley, 1970; University of Paris, 1981; Cambridge University, 1988–89; Uppsala University, 1992. President, International Association of Procedural Law, 1983—. Fellow, Center for Advanced Study in the Behavioral Sciences, 1984–85; senior research fellow, Hoover Institution, 1985—. Founding member, *Academia Europaea*; honorary president, *Asociación Ibero-Latino Americana de Derecho Procesal Constitucional*, 1992. Principal subjects: comparative law, constitutional law, access to justice, and jurisprudence. (On leave, 1995–96.)



GERHARD CASPER
President of the University and Professor of Law

Referendar, Hamburg, 1961; LL.M., Yale, 1962; Dr. iur. utr., University of Freiburg i. Br., 1964; LL.D. (hon.), John Marshall Law School, 1982; IIT Chicago-Kent, 1987. Assistant professor (political science), University of California at Berkeley, 1964–66. Associate professor, University of Chicago, 1966–69; professor of law and political science, 1969–76; Max Pam Professor of American and Foreign Law, 1976–80; William B. Graham Professor of Law, 1980–87; Graham Distinguished Service Professor of Law, 1987–92; dean of the law school, 1979–87; provost of the university, 1989–92. President and member of the faculty, Stanford University, 1992—. Visiting professor, Catholic University of Louvain, Belgium, 1970; University of Munich, 1988, 1991. Elected member, American Law Institute, International Academy of Comparative Law. Fellow, American Academy of Arts and Sciences, 1980—. Principal subjects: constitutional law, coordination of regulation, and the European Community.



WILLIAM COHEN
C. Wendell and Edith M. Carlsmith Professor of Law

B.A., University of California at Los Angeles, 1953, LL.B., 1956 (editor-in-chief, *UCLA Law Review*). Clerk to Justice Douglas, U.S. Supreme Court, 1956–57; member of the faculty, University of Minnesota, 1957–60. Visiting professor, University of California at Los Angeles, 1959–60;

associate professor and professor, 1960–70. With Stanford since 1970. Merriam Distinguished Visiting Professor, Arizona State Law School, 1981. Principal subjects: torts, federal jurisdiction, and constitutional law. (On leave, Spring 1996.)



LANCE E. DICKSON
Director of Robert Crown Library and Professor of Law

B.A., University of Cape Town, 1960, LL.B., 1962, B. Com., 1969; M.L.S., University of Texas, 1971. Magistrate's clerk, Department of Justice, Cape Town, 1961–62. Legal assistant, Mobil Oil, Cape Town, 1963–70; company secretary and legal counsel, 1970. Associate law librarian, University of Texas School of Law, 1973–75. Law librarian, Louisiana State University Law Center, 1975–87; associate professor, 1975–78; professor from 1978. With Stanford since 1987,



JOHN J. DONOHUE III
Professor of Law

B.A., Hamilton College, 1974; J.D., Harvard, 1977 (*Civil Liberties Law Review*); M.A., Yale, 1982, M. Phil., 1984, Ph.D. (economics), 1986. Clerk to Chief Judge T. Emmet Clarie, U.S. District Court, Conn., 1977–78. Associate attorney, Covington & Burling, Washington, D.C., 1978–81. Private practice

(part-time), 1981–86. Instructor in economics, Yale, 1983–85. Member of the faculty, Northwestern, 1986–95 (Harry B. Reese Teaching Professor, 1994–95; Class of 1967 James B. Haddad Professor of Law, 1994–95). Visiting professor of law and economics, University of Virginia Law School, 1990; visiting professor of law, University of Chicago, 1992. Member and former section chair, Board of Directors, American Law and Economics Association; former member, advisory board, corporate counsel center, Northwestern University. Former associate editor, *Law and Social Inquiry*. Member of American Bar Association, American Economic Association, Law & Society Association, and American Law & Economics Association. Consultant to Federal Courts Study Committee and ABA Standing Committee on Justice Ruth Bader Ginsburg and Justice David Souter. Fellow in economics, Yale University; fellow, Yale Law School Program in Civil Liability, 1985–86. Grant recipient, Fund for Labor Relations, University of Michigan, 1988; grant recipient, National Science Foundation, 1992. Research fellow, American Bar Foundation, 1986–95. Joined Stanford faculty in 1995. Principal subjects: corporate finance and employment discrimination.



JOHN HART ELY
Robert E. Paradise Professor of Law

A.B., Princeton, 1960; LL.B., Yale, 1963; LL.D. (hon.), University of San Diego, 1988; IIT Chicago-Kent, 1991. U.S. Army, 1963–64; President's Commission on the Assassination of President Kennedy, 1964; clerk to Chief Justice Warren, U.S. Supreme Court, 1964–65; Fulbright scholar, London School of Economics and

Political Science, 1965–66. Attorney, Defenders, Inc., San Diego, 1966–68. Member of the faculty, Yale, 1968–73; Harvard, 1973–82 (Ralph S. Tyler, Jr., Professor of Constitutional Law from 1981). General Counsel, U.S. Department of Transportation, 1975–76. With Stanford since 1982; Richard E. Lang Professor of Law and Dean, 1982–87; Paradise Professor, 1988—. Visiting professor, Miami, 1994–95. Fellow, American Academy of Arts and Sciences; Council on Foreign Relations. Recipient, Triennial Book Award of the Order of the Coif, 1982. Principal subjects: constitutional law, national security law, and underwater treasure.



GEORGE FISHER
Associate Professor of Law

A.B., Harvard College, 1982, J.D., 1986 (*Harvard Law Review*). Clerk to the Honorable Stephen G. Breyer, U.S. Court of Appeals, First Circuit, 1986–87. Assistant District Attorney, Middlesex County, Mass., 1987–91. Assistant Attorney General, Civil Rights Division, Mass. Attorney General's Office, 1991–92. Adjunct

instructor, Northeastern University, 1991; assistant clinical professor of law, Boston College, 1992–95. Joined Stanford faculty in 1995. Principal subjects: criminal law and procedure, evidence.



RICHARD THOMPSON FORD
Assistant Professor of Law

A.B., Stanford, 1988; J.D., Harvard, 1991. Instructor, Harvard, 1989–91 (fall terms). Consultant on housing policy, City of Cambridge, Mass., 1990–91. Associate, Morrison & Foerster, San Francisco, 1991–93. Reginald Lewis Fellow, Harvard, 1993–94. Joined Stanford faculty in 1994. Principal subjects: property,

housing law, local government, and race and the law.



MARC A. FRANKLIN
Frederick I. Richman Professor of Law

A.B., Cornell, 1953, LL.B., 1956 (editor-in-chief, *Cornell Law Quarterly*). Private practice in New York City, 1956–57; clerk to Judge Carroll C. Hincks, U.S. Court of Appeals, Second Circuit, 1957–58; to Chief Justice Warren, U.S. Supreme Court, 1958–59; member of the faculty, Columbia, 1959–62. With Stanford

since 1962. Fellow, Center for Advanced Study in the Behavioral Sciences, 1968–69; Fulbright scholar, Victoria University of Wellington, New Zealand, 1973. Visiting professor, UC–Berkeley School of Law, 1974–75, 1976–77; Marshall Madison Visiting Professor of Law, University of San Francisco, 1983–84. Principal research subjects: torts, and mass media law.



BARBARA H. FRIED
Professor of Law

B.A., Harvard, 1977, M.A. (English and American literature), 1980, J.D., 1983. Clerk to Judge J. Edward Lumbard, U.S. Court of Appeals, Second Circuit, 1983–84. Associate, Paul Weiss Rifkind Wharton & Garrison, New York City, 1984–87. Member of the Stanford faculty since 1987. Principal subjects: taxation, property, and contracts.

. . . Faculty & Deans



LAWRENCE M. FRIEDMAN
Marion Rice Kirkwood Professor of Law

A.B., University of Chicago, 1948, J.D., 1951, LL.M., 1953 (associate editor, *University of Chicago Law Review*); LL.D. (hon.), University of Puget Sound, 1977, John Jay College, City University of New York, 1989, University of Lund, 1993, John Marshall Law School, 1995. Member of the faculty, St. Louis

University, 1957–61; University of Wisconsin, 1961–67. With Stanford since 1968; professor (by courtesy) of political science, 1986—. Fellow, Center for Advanced Study in the Behavioral Sciences, 1974–75. Visiting professor, University of Chicago Law School, 1992, 1994. Past president, American Society for Legal History; vice-president, Research Committee, Sociology of Law, International Sociological Association; past president, Law and Society Association. Fellow, American Academy of Arts and Sciences. Recipient, 1976 Triennial Book Award of the Order of the Coif, 1982 Willard Hurst Prize and 1992 Harry Kalven Prize of the Law and Society Association. Principal subjects: law and society, trusts and estates, and American legal history.



RONALD J. GILSON
Charles J. Meyers Professor of Law and Business

A.B., Washington University, 1968; J.D., Yale, 1971 (note and comment editor, *Yale Law Journal*). Clerk to Judge David L. Bazelon, U.S. Court of Appeals, District of Columbia Circuit, 1971–72; private practice in San Francisco, 1972–78. Member of the Stanford faculty since 1979;

director, Law and Business Program, 1988—; Helen L. Crocker Faculty Scholar, 1990–92. Visiting professor, Yale Law School, 1982, Henley Visiting Professor of Law and Finance, Columbia University Law and Business Schools, 1991–92; Stern Professor of Law and Business, 1992—. Visiting scholar, Hoover Institution, 1988–89. Reporter, American Law Institute Corporate Governance Project, 1985–1994. Principal subjects: business associations, business planning, securities regulation, and corporate acquisitions. (On leave, Autumn 1995.)



ROBERT A. GIRARD
Professor of Law (Emeritus)

A.B., University of Washington, 1953; LL.B., Harvard, 1956 (editor, *Harvard Law Review*). Clerk to Justice Black, U.S. Supreme Court, 1956–57. Member of the Stanford faculty since 1958. Principal subjects: environmental law, land use planning and control, and law and the political process.



PAUL GOLDSTEIN
Stella W. and Ira S. Lillick Professor of Law

A.B., Brandeis, 1964; LL.B., Columbia, 1967 (*Columbia Law Review*). Member of the faculty, State University of New York at Buffalo, 1967–75. Visiting associate professor, Stanford, 1972–73; professor since 1975 (Lillick Professor, 1985—). Principal subject: intellectual property law.



WILLIAM BENJAMIN GOULD IV
Charles A. Beardley Professor of Law

A.B., University of Rhode Island, 1958; LL.B., Cornell, 1961. Assistant general counsel, United Automobile Workers, 1961–62. Graduate study, London School of Economics, 1962–63; staff attorney, National Labor Relations Board, Washington, D.C., 1963–65; private practice in New York City, 1965–68; member of

the faculty, Wayne State, 1968–71. With Stanford since 1972. Visiting professor, Harvard, 1971–72; Howard, 1989; Boston University, 1994. Fulbright lecturer, University of Witwatersrand, South Africa, Summer 1991. Chairman, National Labor Relations Board, 1994—. Member, Council of the Administrative Conference of the United States, 1994—. Principal subjects: labor law, comparative labor law, and employment discrimination law. (On leave, 1995–96.)



HENRY T. GREELY
Professor of Law

A.B., Stanford, 1974; J.D., Yale, 1977. Clerk to Judge John Minor Wisdom, U.S. Court of Appeals, Fifth Circuit, 1977–78; to Justice Stewart, U.S. Supreme Court, 1978–79. Special assistant to the general counsel, U.S. Dept. of Defense, 1979; staff assistant to the secretary, U.S. Dept. of Energy,

1979–81. Attorney, Tuttle & Taylor, Los Angeles, 1981–85 (partner from 1984). Member of the Stanford faculty since 1985. Ethics chair, North American Committee, Human Genome Diversity Project. Principal subjects: health law, natural resources law, energy law, property, and contracts.



THOMAS C. GREY

Nelson Bowman Sweitzer and Marie B. Sweitzer Professor of Law

A.B., Stanford, 1963; B.A., Oxford, 1965; LL.B., Yale, 1968 (note and comment editor, *Yale Law Journal*). Marshall scholar, Oxford, 1963-65; clerk to Judge J. Skelly Wright, U.S. Court of Appeals, District of Columbia Circuit, 1968-69; to Justice Marshall, U.S. Supreme Court, 1969-70.

Associate, Washington Research Project, 1970-71. Member of the Stanford faculty since 1971. Principal subjects: constitutional law, torts, and jurisprudence.



JOSEPH A. GRUNDFEST

Professor of Law

M.Sc. Program, London School of Economics, 1972; B.A., Yale, 1973; J.D., Stanford, 1978; doctoral studies (economics), 1975-78. Economist and consultant, Rand Corporation, 1973-78. California State Fellow for the Study of Law and Economics, 1974-78; research fellow, Brookings Institution, 1978-79.

Associate, Wilmer, Cutler & Pickering, Washington, D.C., 1979-84. Counsel and senior economist, Council of Economic Advisers, Office of the President, 1984-85; commissioner, Securities and Exchange Commission, 1985-90. Member of the Stanford faculty since 1990; John M. Olin Faculty Fellow, 1991-92; director, Roberts Program for Law, Business, and Corporate Governance, 1993—. National fellow, Hoover Institution, 1992. Fellow, Council on Foreign Relations; elected member, American Law Institute. Principal subjects: corporate law, securities regulation, and mergers and acquisitions.



GERALD GUNTHER

William Nelson Cromwell Professor of Law (Emeritus)

A.B., Brooklyn College, 1949; M.A., Columbia, 1950; LL.B., Harvard, 1953 (note editor, *Harvard Law Review*); LL.D. (hon.), IIT Chicago-Kent, 1987; Brooklyn Law School, 1990; Brooklyn College of the City University of New York, 1990; Duquesne University, 1995. Clerk to

Judge Learned Hand, U.S. Court of Appeals, Second Circuit, 1953-54; to Chief Justice Warren, U.S. Supreme Court, 1954-55. Private practice, New York City, 1955-56. Member of the faculty, Columbia, 1956-62. With Stanford since 1962. Visiting professor, Harvard, 1972-73; IIT Chicago-Kent, 1987; Brooklyn Law School, 1993. Guggenheim fellow, 1963; fellow, Center for Advanced Study in the Behavioral Sciences, 1969-70; senior fellow, National Endowment for the Humanities, 1980-81, 1985-86. Fellow, American Academy of Arts and Sciences; elected member, American Law Institute, American Philosophical Society. Principal subject: constitutional law.



JANET E. HALLEY

Professor of Law

B.A., Princeton, 1974; Ph.D. (English literature), University of California at Los Angeles, 1980; J.D., Yale, 1988 (founding and executive editor, *Yale Journal of Law and the Humanities*). Teaching fellow, UCLA, 1976-78; assistant professor of English, Hamilton, 1980-85. Thomas Emerson fellow, Connecticut Civil

Liberties Union, 1986-87. Clerk, Judge Gilbert S. Merritt, U.S. Court of Appeals, Sixth Circuit, 1988-89. Associate (litigation), Skadden, Arps, Slate, Meagher & Flom, Boston, 1989-91. At Stanford since 1991. Member, Board of Directors, ACLU of Northern California, 1992—. Principal subjects: civil procedure, family law, and national, racial, and sexual identities in law.



THOMAS C. HELLER

Professor of Law

A.B., Princeton, 1965; LL.B., Yale, 1968. Fellow, International Legal Center, Bogotá, Colombia, 1968-70; fellow, Law and Modernization, Yale, 1970-71. Member of the faculty, University of Wisconsin, 1971-79; co-director, Center for Public Representation, Madison, Wisconsin, 1976-77. Visiting professor, Center

for Law and Economics, University of Miami, 1977-78; Stanford, 1978-79; Jean Monet Visiting Professor, European University Institute, 1992-93. Professor, Stanford, 1979—; director, Overseas Studies Program, 1985-92; deputy director, Institute for International Studies, 1989-92 (affiliated professor since 1993). Kellogg national fellow, 1981-83; fellow, Humanities Research Institute, UC-Irvine, 1989. Principal subjects: taxation, international law and economy, and legal theory.



BILL ONG HING

Associate Professor of Law

A.B., UC-Berkeley, 1971; J.D., University of San Francisco, 1974. Director, Immigration Law Unit, San Francisco Neighborhood Legal Assistance, 1975-79. Adjunct professor, University of San Francisco, 1976-79; New College, San Francisco, 1977-83; assistant professor, Golden Gate University School of Law,

1979-82; associate professor, 1982-85. With Stanford since 1985; associate professor, 1990—. Chancellor's distinguished professor, UC-Berkeley, 1993. Executive director (volunteer), Immigrant Legal Resource Center; co-chair, Committee for Immigration Justice; board member, Rosenberg Foundation; member, Advisory Committee, Immigration Policy Project, Carnegie Endowment for International Peace; member, Department of Justice Citizens' Advisory Panel. Interim executive director, East Palo Alto Community Law Project, 1987. Principal subjects: immigration law, the lawyering process, and immigration clinic.

... Faculty & Deans



J. MYRON JACOBSTEIN
Law Librarian and Professor of Law (Emeritus)

B.A., Wayne State, 1946; M.S., Columbia, 1950; J.D., Chicago-Kent School of Law, 1952 (case editor, *Chicago-Kent Law Review*). Assistant law librarian, Columbia, 1955-59; member of the faculty and law librarian, University of Colorado, 1959-63. With Stanford since 1963. Principal subject: legal bibliography. (Not teaching, 1995-96.)



MARK G. KELMAN
Academic Coordinator and Professor of Law

A.B., Harvard, 1972, J.D., 1976. Director of criminal justice projects, Fund for the City of New York, 1976-77. Member of the Stanford faculty since 1977; professor, 1982-; academic coordinator, 1994-. Principal subjects: legal theory, criminal law, property, and taxation.



SALLIE KIM
Assistant Dean, Student Affairs

A.B., Princeton University, 1986; J.D., Stanford, 1989. Clerk to Judge Spencer Williams, U.S. District Court, Northern District of California, 1989-91. Private practice, Wilson, Sonsini, Goodrich & Rosati, 1991-94; Heller, Ehrman, White & McAuliffe, 1994-95. Member, Stanford Law School Board of Visitors, 1990-93. Joined Stanford staff in 1995.



WILLIAM C. LAZIER
Nancy and Charles Munger Professor of Business

A.B., Grinnell, 1953; M.B.A., Stanford, 1957. C.P.A., 1959 (California). Tax manager, Arthur Andersen & Co., 1957-64; executive vice-president, Lightcraft of California, 1964-68; U.S. Filter Corp., 1968-71. Chairman, Bristol Corp., since 1971. Lecturer (business administration), Stanford Graduate School of Business, 1982-93. Lecturer, Stanford Law School, 1990-92; Munger Visiting Professor of Business, 1992-93; Munger Professor as of 1993. Principal subject: business for lawyers.



LINDA A. MABRY
Associate Professor of Law

A.B., Mount Holyoke, 1973 (Makele U., Kampala, Uganda, 1971-72); M.A. (international affairs), School of Advanced International Studies, Johns Hopkins, 1975; J.D., Georgetown, 1978 (editor, *Law & Policy in International Business*; executive editor, *Association of Student International Law Societies International Law Journal*). Attorney-adviser, Office of the Legal Adviser, U.S. Department of State, 1978-80; special assistant to the general counsel, U.S. Department of Commerce, 1980-81. Attorney, Hogan & Hartson, Washington, D.C., 1981-82; Miller & Chevalier, Chartered, 1982-86; managing attorney, Helm & Purcell, Oakland, California, 1986-87; Howard, Rice, Nemerovski, Canady, Robertson & Falk, San Francisco, 1987-93 (partner from 1991). Lecturer, Stanford, 1992. Joined Stanford faculty in 1993. Principal subjects: international business transactions, international trade, and international trade and investment aspects of economic development. (On leave, Spring 1996.)



J. KEITH MANN
Professor of Law (Emeritus)

B.S., Indiana University, 1948, LL.B., 1949 (article and book review editor, *Indiana Law Journal*); LL.D. (hon.), Monmouth College, 1989. Clerk to Justices Rutledge and Minton, U.S. Supreme Court, 1949-50; private practice in Washington, D.C., 1950; special assistant, Wage Stabilization Board, 1951; member of the faculty, University of Wisconsin, 1951-52. With Stanford since 1952; associate dean, 1961-85; acting Dean, 1976, 1981-82. Chairman and member of various presidential boards and commissions in national labor disputes. Special master, U.S. Supreme Court, 1980-. Principal subject: labor-management relations. (Not teaching, 1995-96.)



MIGUEL A. MÉNDEZ
Professor of Law

A.A., Texas Southmost College, 1963; A.B., George Washington University, 1965, J.D., 1968. Clerk, U.S. Court of Claims, 1968-69; legislative assistant to U.S. Senator Alan Cranston, 1969-71; staff attorney, Mexican American Legal Defense Fund, 1971-72; deputy director, California Rural Legal Assistance, 1972-74; deputy public defender, Office of the Monterey County Public Defender, 1975-76. Member of the Stanford faculty since 1977. Visiting professor, Santa Clara University, 1977; University of California at Berkeley, 1982; University of Vermont, 1986; University of San Diego, 1990-91. Elected member, American Law Institute. Principal subjects: evidence (theory and practice), criminal law and procedure, trial advocacy, and the lawyering process. (On leave, Autumn 1995.)

**JOHN HENRY MERRYMAN**

Nelson Bowman Sweitzer and Marie B. Sweitzer Professor of Law (Emeritus) and Affiliated Professor in the Department of Art

B.S., University of Portland, 1943; M.S., Notre Dame, 1944, J.D., 1947 (editor-in-chief, *Notre Dame Lawyer*); LL.M., New York University, 1951, J.S.D., 1955; Dr. h.c., Aix-en-Provence, 1982; Trieste, 1989.

Member of the faculty, Santa Clara University, 1948–53. With Stanford since 1953. Visiting professor, New York University School of Law, 1950, 1982; Institute of Comparative Law, University of Rome, 1963–64; visiting research professor, Center of Economic Research, Athens, 1962 and 1964; Fulbright research professor, Max Planck Institute, Hamburg, 1968–69; Guggenheim fellow, 1985–86; O'Connell Distinguished Visiting Professor, University of Florida College of Law, 1990. President, American Academy of Foreign Law; International Cultural Property Society. Principal subjects: art and the law, and comparative law.

**A. MITCHELL POLINSKY**

Josephine Scott Crocker Professor of Law and Economics

A.B., Harvard, 1970; Ph.D. (economics), M.I.T., 1973; M.S.L., Yale, 1976. Member of the faculty, Harvard, 1973–79. Russell Sage Foundation Resident in Law and Social Science, Yale Law School, 1975–76; Harvard Law School, 1976–77. Research associate, Law and Economics

Program, National Bureau of Economic Research, 1978—. Member of the Stanford faculty since 1979; director, John M. Olin Program in Law and Economics; professor (by courtesy) of economics. Visiting professor, Harvard, 1992–93. Guggenheim fellow, 1993–94. President, American Law and Economics Association, 1993–94. Principal subject: law and economics.

**ROBERT L. RABIN**

A. Calder Mackay Professor of Law

B.S., Northwestern, 1960, J.D., 1963 (article editor, *Northwestern University Law Review*), Ph.D. (political science), 1967. Member of the faculty, University of Wisconsin, 1966–70. With Stanford since 1970. Senior environmental fellow, U.S. Environmental Protection Agency, 1979–80; visiting fellow, Centre for Socio-

Legal Studies, Oxford, 1982; fellow, Center for Advanced Study in the Behavioral Sciences, 1982–83. Reporter, ABA Action Commission to Improve the Tort Liability System, 1986–87; associate reporter, ALI Project on Compensation and Liability for Product and Process Injuries, 1988–91. Visiting professor, Harvard, 1987–88; Northwestern, 1994. Principal subjects: torts, administrative law, and environmental law.

**MARGARET JANE RADIN**

Professor of Law

A.B., Stanford, 1963; M.F.A. (music), Brandeis, 1965; doctoral studies (music history), University of California at Berkeley, 1965–68; J.D., University of Southern California Law Center, 1976; LL.D. (hon.), IIT Chicago-Kent, 1994. Assistant professor of law, University of Oregon, 1976–78. Associate professor,

University of Southern California Law Center, 1979–82; professor, 1982–89 (Carolyn Craig Franklin Professor from 1987). Professor, Stanford, 1989—. Visiting professor, University of California at Los Angeles, 1978–79; Harvard, 1984–85; USC, 1989–90. Principal subjects: real property, intellectual property, jurisprudence, and law and social philosophy.

**DEBORAH L. RHODE**

Professor of Law

B.A., Yale, 1974, J.D., 1977 (editor, *Yale Law Journal*). Clerk to Judge Murray Gurfein, U.S. Court of Appeals, Second Circuit, 1977–78; to Justice Marshall, U.S. Supreme Court, 1978–79. Member of the California and District of Columbia bars. Member of the Stanford faculty since 1979; director, Institute for

Research on Women and Gender, 1986–90; director, Keck Center on Legal Ethics and the Legal Profession, 1993—. Visiting professor, Harvard, 1984–85; Columbia, 1993; New York University, 1993, 1995. Trustee, Yale University, 1983–89. Principal subjects: professional responsibility, and gender discrimination. (On leave, Autumn 1995.)

**DAVID L. ROSENHAN**

Professor of Law and Psychology

A.B., Yeshiva College, 1951; M.A., Columbia, 1953, Ph.D. (psychology), 1958. Director of research, Department of Psychiatry, City Hospital at Elmhurst, 1958–60; member of the psychology and sociology faculties, Haverford College, 1960–62; lecturer in psychology and psychiatry, University of Pennsylvania,

1961–64; research psychologist, Educational Testing Service, 1962–68; member of the psychology faculty, Princeton, 1964–68; psychology and education faculties, Swarthmore College, 1968–70. At Stanford since 1970, with a joint appointment in the Law School and the Department of Psychology. Visiting fellow, Wolfson College at Oxford, 1977–78, 1985. Visiting professor, University of W. Australia, 1984; Georgetown University, 1988. Fellow, American Association for the Advancement of Science. Principal subject: law and behavioral science.

. . . Faculty & Deans



KENNETH E. SCOTT
*Ralph M. Parsons Professor
of Law and Business (Emeritus)*

A.B., College of William and Mary, 1949; M.A., Princeton, 1953; LL.B., Stanford, 1956 (article editor, *Stanford Law Review*). Private practice in New York City, 1956–59, and in Los Angeles, 1961–63; chief deputy savings and loan commissioner of California, 1961–63; general counsel, Federal Home Loan Bank Board, 1963–67. Member of the Stanford faculty since 1968; Parsons Professor, 1983—. Senior research fellow, Hoover Institution, 1978—. Visiting professor, University of Chicago, 1978; University of Pennsylvania, 1988. Principal subjects: business associations, financial institutions, and securities regulation. (Not teaching, 1995–96.)



BYRON D. SHER
Professor of Law (Emeritus)

B.S.B.A., Washington University, 1949; J.D., Harvard, 1952 (editor, *Harvard Law Review*). Teaching fellow, Harvard, 1954–55; member of the faculty, Southern Methodist University, 1955–57. With Stanford since 1957. Fulbright scholar, Victoria University of Wellington, New Zealand, 1964. Member of the California legislature, 1980—. Principal subjects: contracts, commercial law, consumer protection, and legislation. (Not teaching, 1995–96.)



WILLIAM H. SIMON
*Kenneth and Harle Montgomery
Professor of Public Interest Law*

A.B., Princeton, 1969; J.D., Harvard, 1974. Private practice in Boston, 1974–77; staff attorney, Legal Services Institute, 1979–81. Member of the Stanford faculty since 1981; professor, 1986—. Visiting professor, Harvard, 1987–88. Visiting staff member, National Center for Economic Development and Law, 1990. Guggenheim fellow, 1994. Principal subjects: business associations, the legal profession, and poverty law. (On leave, Autumn 1995.)



KATHLEEN M. SULLIVAN
Professor of Law

B.A., Cornell, 1976; B.A., Oxford, 1978; J.D., Harvard, 1981. Clerk to Judge James L. Oakes, U.S. Court of Appeals, Second Circuit, Brattleboro, Vermont, and New York City, 1981–82. Litigator, Cambridge and Boston, Mass., 1982–84. Assistant professor, Harvard, 1984–89; professor, 1989–93. Visiting professor, University of Southern California Law Center, 1991; Stanford, 1992. Joined Stanford faculty in 1993. Principal subjects: constitutional law, and criminal law.



KIM A. TAYLOR-THOMPSON
Associate Professor of Law

A.B., Brown, 1977; J.D., Yale, 1980. Associate, Crowell & Moring, Washington, D.C., 1980–81. Staff attorney, Public Defender Service for the District of Columbia, 1981–86; deputy chief, trial division, 1986–87; director of training, 1987–88; director, 1988–91. Lecturer, Public Defender Service Training Program, 1984, 1985, 1986, 1988, 1989, 1990. Guest lecturer, Yale, 1985, 1990, 1993; Georgetown, 1985, 1986, 1990; and elsewhere. Guest faculty, Harvard, 1989, 1990, 1994. Fellow in professional responsibility, Yale, 1990. Associate professor, Stanford, 1991—. Principal subjects: criminal law, ethics in the criminal justice system, and criminal defense lawyering and representation of subordinated groups.



BARTON H. THOMPSON, JR.
*Professor of Law and
Robert E. Paradise Fellow*

A.B., Stanford, 1972. M.B.A. and J.D., 1976. Clerk to Judge Joseph T. Sneed, U.S. Court of Appeals, Ninth Circuit, 1976–77; to Justice Rehnquist, U.S. Supreme Court, 1977–78. Associate, O'Melveny & Myers, 1978–83; partner, 1984–86. Lecturer, UCLA, 1980–83. Member of the Stanford faculty since 1986; Robert E. Paradise Fellowship for Excellence in Teaching and Research, 1993—. Principal subjects: natural resources law, environmental law, and property.



MICHAEL S. WALD
Jackson Eli Reynolds Professor of Law

A.B., Cornell, 1963; M.A. (political science) and LL.B., Yale, 1967 (projects editor, *Yale Law Journal*). Attorney, Public Defender Service and Center for Law and Social Policy, Washington, D.C., 1970–71; Youth Law Center, San Francisco, 1971–72. Guggenheim fellow, 1982–83. Member of the Stanford faculty

since 1967; director, Stanford Center for the Study of Youth Development, 1984–87; professor (by courtesy) of education, 1988–93; public policy, 1995—; sociology, 1995—. Deputy General Counsel, Department of Health and Human Services, 1993–95. Principal subjects: children and public policy, and family law. (On leave, Autumn 1995.)



HOWARD R. WILLIAMS
Robert E. Paradise Professor of Natural Resources Law (Emeritus)

A.B., Washington University, 1937; LL.B., Columbia, 1940 (editor, *Columbia Law Review*). Private practice in New York City, 1940–41; member of the faculty, University of Texas, 1946–51; Columbia, 1951–63 (Dwight Professor of Law from 1959). With Stanford since 1963.

Principal subjects: trusts and estates, oil and gas, and professional responsibility. (Not teaching, 1995–96.)



ROBERT WEISBERG
Vice Provost of the University, Academic Coordinator (Law School), Professor of Law, and Bernard D. Bergreen Faculty Scholar

A.B., City College of New York, 1966; A.M., Harvard, 1967. Ph.D. (English), 1971; J.D., Stanford, 1979 (president, *Stanford Law Review*). Associate editor, Prentice-Hall, Inc., 1966; teaching fellow, Harvard, 1967–69;

assistant professor, Skidmore College, 1970–76; instructor, Great Meadow Correctional Facility, New York, 1974–76. Clerk to Chief Judge J. Skelly Wright, U.S. Court of Appeals, D.C. Circuit, 1979–80; to Justice Stewart, U.S. Supreme Court, 1980–81. Member of the Stanford faculty since 1981; associate dean for academic affairs, Law School, 1987–89; affiliated faculty member, Program in Modern Thought and Literature, 1991—; academic coordinator, Law School, 1994—; vice provost for faculty recruitment and development, Stanford University, 1994—. Principal subjects: commercial law, criminal law and procedure, and secured transactions.



DEBORAH M. WEISS
Associate Professor of Law

B.A., Yale, 1980; M.A., Harvard (economics), 1988; J.D., Columbia, 1983 (articles editor, *Columbia Law Review*). Member of the Stanford faculty since 1989. Principal subjects: taxation, employment, and law and economics.

Visitors & Lecturers



Ann Alpers, JD
Visiting Asst. Professor
 Asst. Professor (Medicine),
 UC-San Francisco.
 Law, Medicine, Ethics
 (Aut).



Andrei Baev, JSM, LLM,
Jurist Scientist, Jurist
Lecturer
 Russian Law (Spr).



Karen Biestman, JD
Lecturer
 Federal Indian Law (Aut).



Audrey Covner, JD
Lecturer
 Attorney, Private practice.
 Legislation Clinic (Aut).



George Crawford, JD
Lecturer
 Visiting Scholar, Hoover
 Institution.
 Fiduciary Investing (Aut).



Sally Dickson, JD
Lecturer
 Director, Multicultural
 Development, Stanford U.
 Subordination (Aut).



Thomas Ehrlich, LLB
Visiting Professor
 Distinguished Scholar, Cal.
 State U. International Law
 and the Use of Force (Aut).



Rande Fenner, JD
Lecturer
 Co-Adviser, Kirkwood
 Moot Court Program.



Jami Floyd, JD
Lecturer/Spaeth Fellow
 Legal Analyst, KPIX and
 CNN.
 Law of Messages (Aut).



James Fuller, JD, LLM
Lecturer
 Partner, Fenwick & West.
 Taxation: International
 Operations and
 Transactions (Spr).



Robert Gordon, JD
Visiting Professor
 Professor, Yale Law
 School.
 Administrative Law (Spr).



Joseph Grodin, JD, PhD
Visiting Professor
 Professor, Hastings
 College of the Law.
 Labor and Employment
 Law (Aut).



Ariela Gross, JD
Acting Assistant Professor
 History of American Law
 (Spr).



Timothy Hallahan, JD
Lecturer
 Instructor, California
 Continuing Education of
 the Bar.
 Advocacy Skills (Jan).



Carey Heckman, JD
Lecturer
 Co-Director, Stanford Law
 & Technology Policy Ctr.
 Law and Technological
 Change (Spr).



Ivan Humphreys, JD
Lecturer
 Partner, Wilson, Sonsini,
 Corporate Taxation,
 Advanced (Spr).



Maria Kivel, JD
Lecturer
 Legal Director/Attorney,
 Central American
 Refugee Center.
 Teaching Self-Help: Lay
 Lawyering (Aut).



Cary Klafter, MS, JD
Lecturer
 Partner, Morrison &
 Foerster.
 Regulation of Mutual
 Funds (Aut).



Michael Klausner, JD, MA
Visiting Assoc. Professor
 Assoc. Professor, NYU
 School of Law.
 Bus. Associations (Aut).
 Corp. Law Theory (Spr).



Allan Kleidon, MBA, PhD
Consulting Professor
 Vice President, Corner-
 stone Research.
 Finance Theory II (Aut).



Elizabeth Kopelman, MPhil, JD, MA. *Acting Asst. Professor. Assoc., Stanford Ctr. on Conflict & Negotiation. Contracts (Aut). Negotiation (Jan).*



Linda Hamilton Krieger, JD
Senior Research Fellow



Carol Larson, JD
Lecturer
Director of Research Grants, Packard Foundation. Child Abuse and Neglect (Spr).



Frankie Leung, JD, MSc
Lecturer
Partner, Lewis, D'Amato. Chinese Law (Aut).



Thomas Nolan, JD
Consulting Professor
Partner, Nolan & Armstrong. Criminal Extern (Aut, Spr). Criminal Procedure, Advanced (Aut).



Lisa Pearson, JD, JSM
Lecturer
Co-Adviser, Kirkwood Moot Court Program.



Maude Pervere, JD
Lecturer. Director, NITA Teacher Training Program; Attorney, Private practice. Negotiation (Aut). Mediation (Spr).



Sophie Pirie, JD, LL.M
Consulting Assoc. Professor
Academic Director, Stanford Program in International Legal Studies.



Alan Salzman, JD, LL.M
Lecturer
Vantage Point Venture Partners. Venture Capital (Aut).



Margaret Sheneman, MA, JD
Lecturer
Partner, Murphy, Weir. Bankruptcy (Aut).



Brian Smith, JD
Lecturer
Partner, Heller, Ehrman. Real Estate Transactions (Aut).



Roman Weil, MS, PhD
Visiting Professor
Professor, U. of Chicago GSB. Accounting for Business Associations (Aut). Accounting (Spr).

NOT PICTURED:

Jeremy Bulow, MA, PhD
Cooperating Professor
Professor, Stanford U. GSB. Deals (Spr).

Stephen Bundy, JD
Visiting Professor
Professor, UC-Berkeley. Civil Procedure (Aut).

Margaret Caldwell, JD
Lecturer
Program Director, Environmental and Natural Resources Law, Stanford Law School. Environmental Workshop (Spr).

Barbara Caulfield, JD
Lecturer
Partner, Latham & Watkins. Trial Advocacy (Spr).

Flora Chu, JD, PhD, MS
Lecturer
Co-Director, Community Environmental Project, Stanford Law School. Community Environmental Clinic (Aut, Spr).

Lainey Feingold, JD
Lecturer
Litigation Supervisor, Disability Rights Education and Defense Fund. Disability Rights (Aut, Spr).

Jonathan Greenberg, JD
Lecturer
Counsel, Arbitration Services Corporation. International Conflict (Spr).

Melanie Greenberg, JD
Lecturer
Associate Director, Stanford Center for International Security and Arms Control. International Conflict (Spr).

Gerhard Hafner
Visiting Professor
Professor, U. of Vienna Law Faculty. Public International Law (Spr).

William Jackson, JD
Lecturer
Associate Director, Harvard Negotiation Project. Negotiation (Jan).

Melissa Johnson, JD
Lecturer
Attorney, Private practice. Legal Writing, Advanced (Aut).

Donald Kennedy, AM, PhD
Cooperating Professor
Bing Professor/President Emeritus, Stanford U. Legal Aspects of Biodiversity (Aut).

Sylvia Law, JD
Kaplan Visiting Professor
Professor, NYU School of Law. Reproductive Health Services, and Health Law (Spr).

Arlene Mayerson, LL.M
Lecturer
Directing Attorney, Disability Rights Education and Defense Fund. Disability Rights (Aut, Spr).

Edward McAniff, LL.B
Lecturer
Partner, O'Melveny & Myers. IOU: Lending Transactions (Aut).

Jeanne Merino, JD
Lecturer
Attorney, East Palo Alto Community Law Project. Community Law Practice (Aut).

Judith Miles, JD
Lecturer
Partner, Heller, Ehrman. Real Estate Transactions (Aut).

Howard Pearson, JD
Lecturer
Attorney, Development, Stanford U. Estate Planning (Spr).

Sanford Ress, JD
Lecturer
Founder, Time Life Careers. Writing and Analysis (Aut, Spr).

Kenneth Rosenblatt, JD
Lecturer
Assistant District Attorney, Santa Clara County. High-Tech Crime (Aut).

William Rubenstein, JD
Consulting Assoc. Professor
Lecturer, Yale Law School. Civil Procedure (Aut). Sexual Orientation Law, and Federal Litigation (Spr).

Charles Siegal, MS, PhD, JD
Lecturer
Partner, Munger, Tolles. International Environmental Law (Spr).

Continued on next page

**VISITORS & LECTURERS,
NOT PICTURED**
(continued):

George Skelly, JD
Lecturer
Partner, Skadden, Arps.
Complex Civil Litigation
(Jan).

Marshall Small, JD
Lecturer
Sr. Counsel, Morrison &
Foerster.
Mergers and Acquisitions
(Spr).

Kenneth Taymor, JD
Lecturer
Partner, Cassidy & Verges.
Local Economic
Development (Spr).

Kent Walker, JD
Lecturer
Director, Corporate
Integrity Program,
AirTouch Commu-
nications.
High-Tech Crime (Aut).

Susan Williams, JD
Lecturer
Shareholder, Gover,
Stetson & Williams.
American Indian Water
Law (Jan).

Cheryl Zelman, JD
Lecturer
Visiting Scholar, Stanford
Law School.
Trial Advocacy (Spr).

Kathryn Zoglin, JD
Lecturer
Deputy City Attorney, San
Francisco City Attorney's
Office.
International Human
Rights Clinic (Aut).



C. Anthony Arnold, JD
Teaching Fellow
Grad., U. of Kansas;
Stanford U. (JD)



Sanya Hill, JD
Teaching Fellow
Grad., U. of San Francisco;
NYU (JD)



**David L. Bridgman, MS,
MLS**
Reference Librarian



Andy Eisenberg, MLS
Access Services Librarian



Bradley Joondeph, JD
Teaching Fellow
Grad., Stanford U. (AB, JD)



Beth McClellan, JD
Teaching Fellow
Grad., Stanford U.; Santa
Clara U. (JD)



**J. Paul Lomio, MLIS, JD,
LLM**
Assistant Director,
Information Services



Regina T. Wallen, MLS
Assistant Director,
Technical Services



Mark Wrathall, MA, JD
Teaching Fellow
Grad., Brigham Young U.;
Boston C. (MA); Harvard
U. (JD)



Katherine Wright, JD
Teaching Fellow
Grad., Stanford U.;
UC-Berkeley (JD)



Erika V. Wayne, MLIS, JD
Reference Librarian



Harriet Wu, MLS
Associate Catalog
Librarian

Library Staff



John Borden, MLS
Access Services



Michelle Brackett
Cataloging



Birgit Calhoun
Collection Management



Elaine Cattell
Access Services



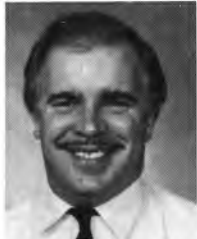
Otilia Cervantes
Information Services



Xia Chen, ML, LLM
Reference



Lois Drews
Access Services



Matthew Dubuque, JD
Access Services



Ruth Friend
Administration



Evelyn Hanson
Acquisitions



Adam Hsu
Access Services



Kelly Kuehl
Access Services



Evelyn McMillan, MLS
Interlibrary Loan



Jane Peters
Serials



Richard Porter
Access Services



Eliska Ryznar, MLS
Catalog Librarian



Nancy Searles
Acquisitions and
Serials



Patrick Tower
Bindery



Zoetina Veal
Acquisitions



Anne R. Wilson
Cataloging



Helen Woods
Acquisitions

NOT PICTURED:

Katherine Hyde, MLIS
Cataloging

Administrative Staff



Pat Adan
Administrative Associate



Lynne Anderson
Administrative Associate



Denise Anklam
Personnel Coordinator



Amy Applebaum
Campaign Coordinator,
External Relations



Ruth Burciaga
Assistant Director,
Financial Aid



Letitia Cameron
Assistant, Admissions



Dennis Cooney
Assistant, Law Fund



Jim Cummings
Assistant, Law Fund



Ann Davis
Assistant, Registrar's
Office



Faye Deal
Director, Admissions
and Financial Aid



Judy Dearing
Administrative Associate



Ann Dethlefsen
Associate Director,
Communications



Susan French
Administrative Associate



Joan Galle
Manager, Computer
Services



Elisabeth Garcia
Stewardship Coordi-
nator, External
Relations



Kelley Garcia
Academic and Student
Affairs Coordinator



Susan George
Assistant, Leadership
Gifts



Anthony Glin
Assistant, Facilities



Milo Gonzalez
Assistant, Facilities



Susan Gutierrez
Assistant Director,
Admissions



Susan Guy
Assistant Manager,
Admissions



Charlene Hamada
Registrar



Ana Hays
Associate Director,
Continuing Legal
Education



Carey Heckman, JD
Co-Director, Stanford
Law and Technology
Policy Center



Constance Hellyer
Director, Communi-
cations



Dianna Henderson
Desktop Specialist,
Communications



Heather Henriksen
Assistant Director,
Law Fund



Mary Beth Jensen
Assistant, Alumni
Programs and
Special Events



Suzanne Jensen
Student Services
Specialist, Career
Services



Madeline Kochen, JD
Director, Public Interest
Law Programs



Nate Levine
Director, Leadership
Gifts



Nancy Mar
Assistant, Registrar's
Office



John Mendoza
Manager, Facilities



Abera Metaferia
Accounting Assistant,
Financial Aid



Doug Monica
Associate Registrar



Terry Haake Morrison
Assistant, Special
Events



Joy Nabi
Administrative Associate



Catherine Nardone
Director, Law Fund



Helen Nichols
Assistant, Continuing
Legal Education



Sophie Pirie, JD, LLM
Academic Director,
Stanford Program in
Int'l Legal Studies



Daniel Pollak
Development Writer,
Communications



Deborah Pugh
Information Systems
Coordinator, External
Relations



Gloria Pyszka
Director, Career
Services



Anna Reposa
Recruitment Admin-
istrator, Career
Services



Marijke Rijdsberman
Development Writer,
Communications



Christian Rowcliffe
Assistant Manager,
Computer Services



Hudson Sangree
Prospect Researcher,
Leadership Gifts



Margie Savoye
Director, Special
Events



Patricia Sheeler
Administrative Associate



Clement Shi
Microcomputer
Specialist



Judy Slater
Program Administrator,
Stanford Center on
Conflict & Negotiation



Marina Sleeper
Accountant, Financial
Services



Karen Storesund
Administrative Associate



Nancy Strausser
Assistant to the Dean



Olivia De Anda Styles
Assistant Director,
Alumni Programs



Anna Szewieczek
Accounting Assistant,
Financial Services



Matt Walker
Administrative Asso-
ciate, Career Services



Shelly Wharton
Director, Alumni
Programs



Arline Wyler
Administrative Associate



Yvonne Yazzie
Administrative Associate



Kate Zaenglein
Associate Director,
Leadership Gifts

NOT PICTURED:

Jerry Bau
Office Assistant

Margaret Caldwell, JD
Program Director,
Environmental and
Natural Resources
Law

Flora Chu, JD, PhD, MS
Co-Director, Community
Environmental Project

Carol Crane
Administrative Associate

Kate DeBoer
Program Administrator,
Stanford Program in
International Legal
Studies

Veronica Eady
Staff Attorney, Commu-
nity Environmental
Project

Kimberley Han
Assistant, Admissions

Lorelei Kelly
Research Fellow,
Stanford Center on
Conflict & Negotiation

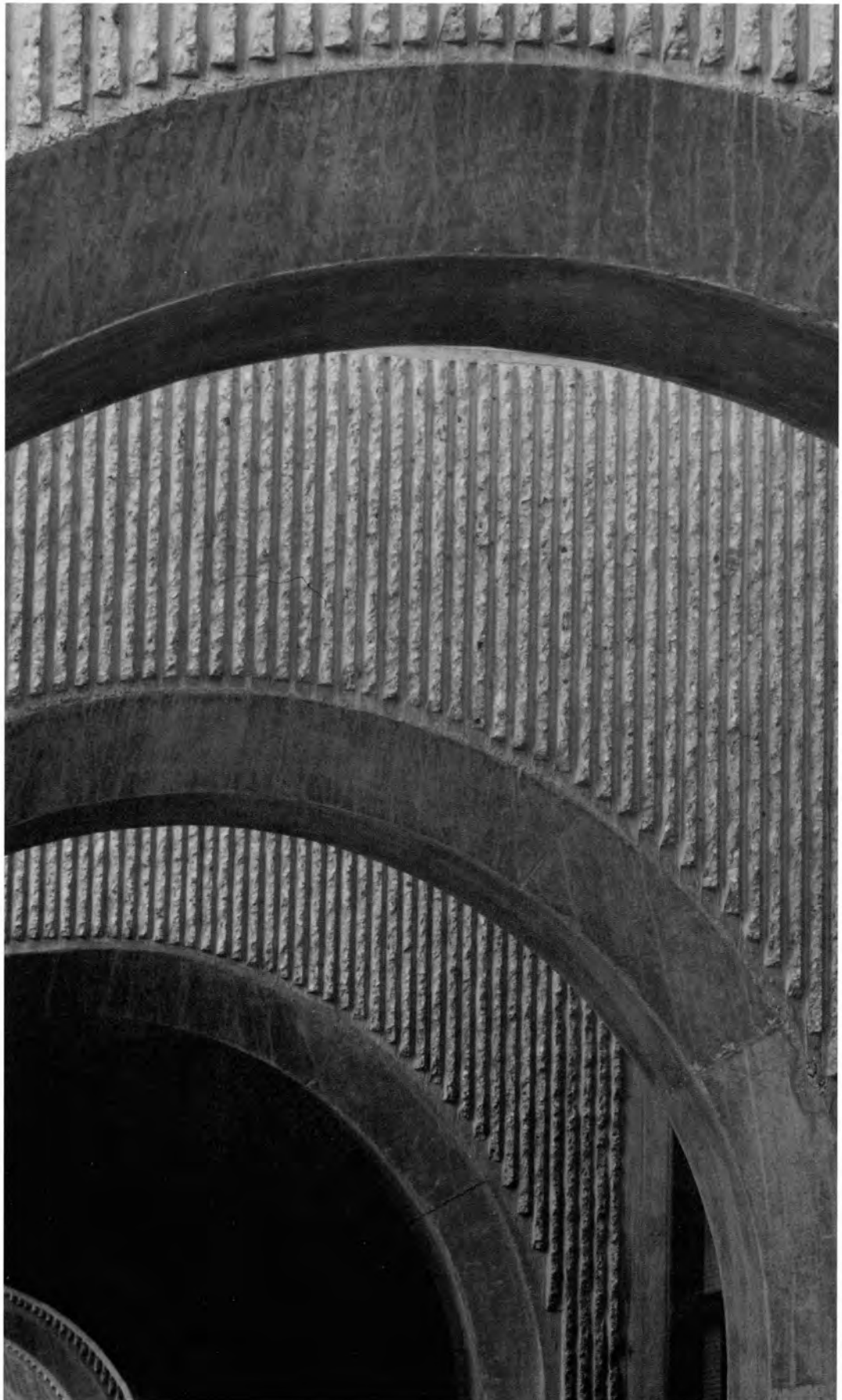
Ivy Kramer
Administrative Associate

Dina Padilla
Assistant, Registrar's
Office

Yvette Sloan
Personnel Manager

Andrew Ward
Associate Director,
Stanford Center on
Conflict & Negotiation

Kit Weinrichter
Administrative Associate



Advanced Degree Students (JSD, JSM, MLS)



C. Anthony Arnold
U. of Kansas; Stanford U. (JD)
San Antonio, TX



Howard J. Bromberg
Harvard U. (AB, JD); Stanford U. (JSM)
Stanford, CA



Thuy N. Bui
UC-San Diego; Santa Clara U. (JD)
San Diego, CA



Rodolfo Camacho
UC-Santa Barbara; Santa Clara U. (JD); U. of Pennsylvania (MBA); C. of William and Mary (LLM)
Salem, OR



Cing-Kae Chiao
National Taiwan U. (LLB, LLM); Harvard U. (LLM)
Taiwan



Mark A. Clawson
Brigham Young U.; Duke U. (JD)
Salt Lake City, UT



Arthur Cockfield
U. of Western Ontario; Queen's U. (LLB)
Toronto, Canada



Daniel H. Cole
Occidental C.; U. of Chicago (AM); Lewis and Clark C. (JD)
Rancho Mirage, CA



Philip Cullet
U. of Geneva; U. of London (LLM, MA)
Switzerland



Philippe Ducor
U. of Geneva (MD, Licence en Droit)
Geneva, Switzerland



Jami Floyd
SUNY-Binghamton; UC-Berkeley (JD)
Berkeley, CA



Rashmi Goel
U. of Saskatchewan (BA, LLB)
Regina, Canada



Alex Gould
U. of Pennsylvania; Stanford U. (PhD)
Philadelphia, PA



Jeongmin Ham
Seoul National U. (LLB); Columbia U. (LLM, JD)
Seoul, Korea



Sanya P. Hill
U. of San Francisco; New York U. (JD)
Daly City, CA



Yifat Holzman-Gazit
Hebrew U. (LLB); Stanford U. (JSM)
Ramat Gan, Israel



Yi-Hong Hsieh
National Taiwan U. (LLM)
Taiwan



Rosemary C. Hunter
U. of Melbourne (BA, LLB)
Melbourne, Australia



Won-Soo Kim
Seoul National U. (LLB); Johns Hopkins U., School of Advanced International Studies (MA)
Seoul, Korea



Hong Liu
Peking U. (PhD); Harvard U. (LLM)
Beijing, China



Matteo Marzi
Catholic U. of Milan (Laurea in Giurisprudenza) U. of Oxford (Magister Juris)
Italy



Annie Mbote
U. of Nairobi (LLB); U. of Warwick (LLM); Kenya School of Law (Dip.L.Ed); U. of Zimbabwe (Dip.W.L.)
Kenya



Grace Pasigan
Brown U.; Boston U. (JD)
New York, NY



Richard C. Reuben
U. of Georgia; Georgia State U. (BA, JD)
St. Louis, MO



Jose Rosendo Rodriguez
*U. Panamericana (JD);
 Advanced Degree,
 Corporate and
 Economic Law)*
 Mexico



Florence B. Shu
*U. of Yaounde (JD, MA);
 Harvard U. (LLM);
 Stanford U. (JSM)*
 Cambridge, MA



Rodrigo Bustos Sierra
*U. of Madrid; U. of
 Brussels (Master's,
 European Law)*
 Madrid, Spain



Henri Tjong
*Erasmus U. of
 Rotterdam (Master's,
 Int'l and European
 Law; Degree, Int'l
 Economics)*
 Indonesia



Fernando Toledo
*Catholic U. of Chile
 (LLB)*
 Chile



Kurt Wagner
*Karl-Franzens U.
 (Master's, Law;
 Doctorate, Law)*
 Austria



Hsiu-I Yang
*National Taiwan U.
 (LLB); U. of
 Washington (LLM)*
 Ilan, Taiwan



Chi-chang Yu
*National Chengchi U.
 (LLB, LLM); Stanford
 U. (JSM)*
 Taipei, Taiwan



Cuneyt Yuksel
*U. of Istanbul (LLB);
 Harvard U. (LLM)*
 Turkey



Paul Zarefsky
*Oberlin C.; U. of
 Pennsylvania (JD);
 Georgetown U.
 (LLM)*
 San Francisco, CA



Limor Zer-Gutman
*Tel Aviv U. (LLB);
 UCLA (LLM)*
 Haifa, Israel

NOT PICTURED:

Nan-Yuan Chiao-Peng
*National Taiwan U.
 (LLB, LLM); Stanford
 U. (JSM)*
 Taipei, Taiwan

Bo-In Lin
*National Tsing Hua U.;
 U. of Cincinnati (MS,
 PhD); Santa Clara U.
 (JD)*
 Los Altos Hills, CA

Sameh Y. El Torgoman
*Cairo U. (Licence en
 Droit)*
 Cairo, Egypt

Nicolette Moodie
*U. of Stellenbosch
 (BA, LLB)*
 South Africa

John S. Harbison
*Western Kentucky U.;
 U. of Kentucky (JD,
 MA); U. of Arkansas
 (LLM)*
 Glasgow, KY

Gloria O. Otosi
*U. of Lagos (LLB,
 LLM); Nigerian Law
 School (BL)*
 Berkeley, CA

David W. Johnson
*Carleton C.; U. of
 Miami (JD)*
 Miami, FL

Class of 1996



Michael D. Adams
UC-Santa Cruz
San Diego, CA



David E. Adelman
Reed C.; Stanford U.
(PhD)
Toronto, Canada



B. R. (Brock) Albin IV
Montana State U.
Bozeman, MT



Charles F. Aragon
U. of Notre Dame
Tucumcari, NM



Dalila I. Argaez
U. of Illinois; MIT (MS)
Lincolnwood, IL



Raquel K. Arnold
Rice U.
Brooklyn, NY



Gary E. Bacher
Georgetown U.
Old Bridge, NJ



Roman A. Bejger
SUNY-Buffalo
Williamsville, NY



Marc E. Bennett
Swarthmore C.; U. of
Michigan (AM, PhD)
New York, NY



Joshua M. Berman
Princeton U.; Sydney
U. (MA)
Encino, CA



Allison H. Binder
Cornell U.
Houston, TX



Alexis D. Bircoll
Yale U.
Los Angeles, CA



Michelle R. Bonner
Johns Hopkins U.; LSE
(MSc)
Augusta, GA



Lawrence N. Bowlus
Harvard U.
London, England



Cynthia C. Bradford
U. of Florida; U. of
Texas (MBA)
Menlo Park, CA



Jeremy Brest
Swarthmore C.
Stanford, CA



E. A. (Libby) Burnside
U. of Texas
El Paso, TX



José A. Cabada
U. of Texas
El Paso, TX



Meredith E. Cabe
Amherst C.
Little Rock, AR



Mark A. Cenite
U. of Wisconsin
Mineral Point, WI



G. Chin Chao
U. of Illinois; Stanford
U. (MS)
Lubbock, TX



Andrea E. Chavez
Harvard U.
Albuquerque, NM



Medessa C. Cheney
Pasadena City C. (AA);
CSU-Los Angeles (BA)
Arcadia, CA



P. Elaine Chiew
Amherst C.
Ipoh, Malaysia



Kristine L. Ching
Santa Clara U.
Kailua, HI



Kau'ilani Chun
Brown U.
Honolulu, HI



Mark Cobler
Stanford U.
San Diego, CA



Madeline S. Cohen
Vassar C.
Boulder, CO



Hilary A. Cox
UC-Davis
Kingston, Jamaica



Brian T. Daly
Catholic U. of America;
U. of Hawaii (MA)
Honolulu, HI

. . . Class of 1996



Christopher R. Davies
Wesleyan U.
Chevy Chase, MD



Thomas P. Dennedy
U.S. Air Force
Academy; MIT (MS)
Cincinnati, OH



Laurel W. Deslich
CSU-Long Beach
Long Beach, CA



Barbara D. Diggs
Wesleyan U.
Washington, DC



Mark H. Domel
U. of Texas
San Antonio, TX



Curtis A. Doty
Harvard U.; Princeton
U. (MA, PhD)
Pittsburgh, PA



Loryn D. Dunn
Harvard U.
Las Vegas, NV



Ira M. Ehrenpreis
UCLA
Los Angeles, CA



Mark L. Eisenhut
UC-Santa Barbara
Petaluma, CA



Lisa R. Eskow
Harvard U.
New York, NY



Stuart A. Fagin
Ohio State U.
South Euclid, OH



Joshua J. Feldman
Lehigh U.
Leominster, MA



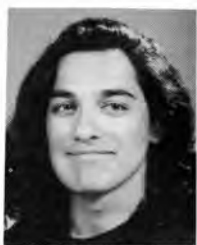
Luis A. Feldstein-Soto
Haverford C.;
Columbia U. (MS)
Santurce, PR



Felicitas french
UC-Berkeley
Berkeley, CA



Helen G. Fields
Bryn Mawr C.
Tustin, CA



Omar C. Figueroa
Yale U.
Irvine, CA



Lydia Alix Fillingham
Harvard U.; Stanford
U. (PhD)
Cambridge, MA



Kristen D. Finney
Stanford U.
Sydney, Australia



David P. Flickinger
Northwestern U.
(BMus, BA)
Charlottesville, VA



Aurelia E. Flores
Colorado C.
Colorado Springs, CO



Vali Frank
U. of Washington
Seattle, WA



Mark K. Friedman
UCLA
Tarzana, CA



Edward A. Frueh
U. of Iowa; Columbia
U. (PhD)
Stanford, CA



Reed S. Gaither
Princeton U.
Ross, CA



Sarah S. Gannett
Stanford U.
Manchester, MA



M. Monica Ganssle
Harvard U.
Nanuet, NY



Craig C. Garby
U. of Colorado;
Cornell U. (MPA)
Boulder, CO



Colin M. Garrett
U. of Chicago
Urbana, IL



Karen A. Gee
UC-Berkeley
Alameda, CA



Bradley J. Gersich
U. of St. Thomas
Brooklyn Park, MN



Maria Ginzburg
Harvard U.
Old Field, NY



Karma M. Giulianelli
Santa Clara U.
Golden, CO



David Goldenberg
Stanford U.
Encino, CA



Ramon M. Gonzalez
UC-Irvine
Irvine, CA



Frank A. Grant IV
UC-Berkeley
Altadena, CA



David B. Graubert
Adelphi U.
Rockville Centre, NY



Rebecca Grey
UC-Santa Cruz
Palo Alto, CA



Jonathan E. Gross
Harvard U.
Miami, FL



Rodrigo M. Guidero
U. of Washington
Freeland, WA



Lori D. Guttentag
Washington U.
Roslyn, NY



Douglas H. Haeuber
U. of Illinois-Chicago (AB,
AM); MGH Inst. (MSN)
Alfred, ME



Bram C. Hall
U. of North Carolina
Charlotte, VT



Liza J. Hanks
UC-Santa Cruz
San Marino, CA



Peter S. Hayes
Princeton U.
Seattle, WA



Kim E. Hazelwood
Trinity Western U.
Three Hills, Canada



Kevin J. Heller
New School for Social
Research (BA, MA)
Boulder, CO



Mary A. E. Helvey
UC-Berkeley
Moraga, CA



Louis R. Hernandez
U. of Illinois
Collinsville, IL



Heather L. Hoecherl
Macalester C.
Minneapolis, MN



Richard T. Holden
Princeton U.
Stanardsville, VA



Leigh A. Howarth
Wichita State U.
Wichita, KS



Paul D. Huie
Loyola U. of Chicago
Brookfield, IL



Peter M. Huie
Loyola U. of Chicago
Brookfield, IL



Mark A. Huppini
UCLA
Spokane, WA



Lilliamae F. Ibayan
UC-Santa Cruz
San Diego, CA



Steve J. Jackson, Jr.
U. of Missouri
Kansas City, MO



Craig D. Jacoby
U. of Pennsylvania
Bala Cynwyd, PA



Karen E. Jaenike
Stanford U.
Gaithersburg, MD



Julie K. Johnson
Georgetown U.
Washington, DC



Eugene E. Jung
Lafayette C.
Armonk, NY

. . . Class of 1996



Drew A. Katz
George Washington U.
Cherry Hill, NJ



Edward V. Kayukov
Moscow State
Linguistics U.
Saratov, Russia



Diane Kelleher
U. of Chicago
Bethesda, MD



Jennifer J. Kent
U. of Iowa
Wales, WI



Lisa C. Kern
Georgetown U. (BA, MA)
Los Angeles, CA



Thomas S. Kim
Stanford U.
Richardson, TX



Curtis A. Kin
USC
Tustin, CA



Sarah L. Kinnick
U. of Colorado
Greeley, CO



Douglas B. Klusmeyer
Northwestern U.;
Stanford U. (AM, PhD)
Minneapolis, MN



Kathleen A. Kondo
U. of Hawaii
Honolulu, HI



Sarah M. Kopp
Williams C.
Arlington, VA



Michael M. Krauss
U. of Michigan
East Lansing, MI



Scott A. Kupor
Stanford U.
Houston, TX



Lance S. Kurata
UCLA
Redlands, CA



Gina P. Kwan
Stanford U. (BS, AM)
Hong Kong



Pamela R. Lacey
Smith C.
Rialto, CA



Sandra M. Lee
Princeton U.
Oakland, NJ



Lior Y. Leser
Brandeis U. (BA, MA)
Miami Beach, FL



Daniel W. Levy
Williams C.
Fair Lawn, NJ



Roberto M. Licon
U. of Texas
El Paso, TX



Helen V. Liu
U. of Texas
Arlington, TX



Robert Lu
Harvard U.
Thousand Oaks, CA



Andrew Y. C. Luh
U. of Virginia
Vienna, VA



Erik G. Luna
USC
Cardiff, CA



Stanley S. Mallison
Cal Poly-Pomona;
UC-Riverside (MA)
Riverside, CA



Gregory N. Mandel
Wesleyan U.
Philadelphia, PA



Michelle G. Marshall
U. of Arizona
Anchorage, AK



Charles F. McCain
Dartmouth C.
Lynnfield, MA



Stephen A. McEwen
Stanford U.
Irvine, CA



Michael J. McGuinness
UC-Berkeley
Davis, CA



Bruce W. McNamer
Harvard U.
Billings, MT



Darrel C. Menthe
UC-San Diego
Yorba Linda, CA



Angela C. Miller
UCLA
Pasadena, CA



Angela C. Mok
Harvard U.
Potomac, MD



Patricia A. Morris
Temple U.
Sellersville, PA



Adele M. Morrison
San Francisco State U.
(BA)
Fort Wayne, IN



Sarah M. Narvaez
Allegheny C.
Park Ridge, IL



Scott A. Nicholas
Tufts U.
Madison, WI



Zachary M. Nightingale
UC-Berkeley;
Stanford U. (MS)
Foster City, CA



Lisa A. Nowell
Harvard U.
New Bedford, MA



Joy M. Ogawa
Mount Holyoke C.;
Stanford U. (PhD)
Lihue, HI



James K. Okamoto
California Inst. of
Tech. (BS, MS, PhD)
Honolulu, HI



Johanna Y. Ong
UCLA
Palmdale, CA



Benjamin R. Ostapuk
U. of Arizona
Tucson, AZ



John B. Owens
UC-Berkeley
Cupertino, CA



Jeehye Park
Harvard U.
Queens, NY



Rebecca L. Pennell
U. of Washington
Richland, WA



Bryan M. Perez
U. of Texas
Houston, TX



Sharon J. Persons
Columbia U.
Gardner, MA



Sharon M. Phelan
U. of Texas; Stanford
U. (MA)
Austin, TX



Nalini M. Philipose
Cornell U.
Washington, DC



Andrea M. Picciotti
Northwestern U.
Holland, MI



Edward R. Policy
U. of Notre Dame
Youngstown, OH



Laura R. Ramos
UC-San Diego
Valencia, CA



Rachel E. Ratliff
Smith C.
Lubbock, TX



Cyrus F. Rea II
U. of Missouri
Branson, MO



John P. Reichmuth
Stanford U.
Hood River, OR



Julia Reigel
Colorado State U.; U.
of Tennessee (MA)
Boulder, CO



Katherine B. Reilly
Yale U.
Alexandria, VA



Jason R. Richards
U. of Virginia
Charleston, SC

. . . Class of 1996



Michael T. Risher
Harvard U.
Chevy Chase, MD



Michael B. Robinson
Bates C.
Cambridge, MA



Henry S. Robles
U. of Texas
Eldorado, TX



Frank L. Russell-Maciell
UC-Davis
Sacramento, CA



William D. Sandoval
UC-Santa Cruz
East Palo Alto, CA



Eric Sanford
Arizona State U.
Phoenix, AZ



Stephanie T. Sasaki
UCLA
Los Angeles, CA



Aaron D. Schuham
Brown U.
Northbrook, IL



Joseph W. Secondine
Harvard U.
Bowling Green, KY



S. R. (Staycie) Sena
UC-Riverside
Riverside, CA



Marc A. Sgaraglino
Yale U.
Highland Park, IL



Allison H. Shalinsky
McGill U.; UC-San
Diego (MA, PhD)
Montreal, Canada



Brett L. Shelton
Baker U.; U. of Kansas
(MA)
Elizabeth, CO



Russell Y. Shoji
UCLA (BS, MS)
Calabasas, CA



Sindy J. Siegel
Tufts U.
West Hartford, CT



David R. Silverman
Dartmouth C.
Oak Park, IL



Mimi P. Singh
Temple U.
Philadelphia, PA



David L. Sloss
Hampshire C.;
Harvard U. (MPP)
Washington, DC



James D. Small III
Williams C.
Arlington, VA



Alan C. Smith
Stanford U.
Colorado Springs, CO



S. Dawn Smith
U.S. Naval Academy;
Providence C. (MBA)
Fayetteville, TN



David A. Smolen
Stanford U.
Highland, IN



David M. Sohn
Amherst C.; LSE
(MSc)
Chappaqua, NY



Carl L. Spataro
U.S. Naval Academy;
Vanderbilt U. (MBA)
Mechanicsburg, PA



Gretchen A. Speidel
Denison U.
Milwaukee, WI



Amy E. Spence
UCLA
Pebble Beach, CA



Deborah A. Spitz
U. of Arizona
Phoenix, AZ



Kevin P. Steinberg
Harvard U.
Montreal, Canada



Thaddeus G. Stephens
Oberlin C.
Pasadena, CA



Cynthia V. Stewart
U. of North Carolina
Raleigh, NC



Delfina M. Tagle
U. of San Diego
San Diego, CA



Ahmed E. Taha
U. of Pennsylvania
Stanford, CA



Michael B. Taylor
UC-Berkeley
Ventura, CA



Lauren A. Teigland
Georgetown U.
Potomac, MD



Dale B. Thompson
Williams C.
Moraga, CA



Hilary C. Tompkins
Dartmouth C.
Absecon, NJ



Susan V. Trachta
Harvard U. (AB, ALM)
Milton, MA



Glenn A. Trager
UC-Santa Cruz;
Stanford U. (AM)
Saugus, CA



Hao-Yuan Tung
MIT
St. Clairsville, OH



Friedrich Von Lohmann
Stanford U.
Laguna Niguel, CA



Christopher J. Wagner
Northwestern U.
Keystone, SD



Kimberly A. Walsh
Stanford U.
Columbus, IN



Karen E. Walter
Stanford U.
Fullerton, CA



Caroline V. Walther-Meade
U. of San Diego
San Diego, CA



Andrew E. Weiss
Stanford U.
Lincolnshire, IL



Brian D. Weiss
Duke U.
Paradise Valley, AZ



Daniel G. Weiss
UC-Berkeley; Stanford U. (AM)
Los Angeles, CA



Carolyn P. Wessling
Yale U.
Los Angeles, CA



David West
San Jose State U.
Carmel Valley, CA



Mark E. Windley
City U. of New York
Bronx, NY



Jeff B. Wise
Brown U.
Chicago, IL



Andrea J. (Dre) Worden
Yale U.; Stanford U. (AM)
Washington, DC



Joseph Yang
California Inst. of Tech. (BS, MS, PhD)
Alexandria, VA



Kial S. Young
Yale U.
Jaffrey, NH



Katherine A. Zonana
Stanford U.
Goleta, CA

Nonmatriculated Students



Susan J. Huh
*USC; IIT Chicago-Kent
College of Law
La Canada, CA*



Lauren M. Michals
*U. of Michigan; UC-
Santa Barbara (MA);
U. of Chicago Law
School. Geneva, IL*

NOT PICTURED:

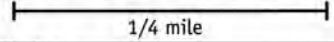
Tamara Hinds
*Bryn Mawr C.; Harvard
Law School
Palo Alto, CA*

Anne-Carine Trouillot
*U. d'État d'Haiti; U. of
Baltimore School of
Law
Baltimore, MD*

Martin A. Wellington
*UC-Irvine; Columbia
U. (MIA); Harvard
Law School
Rancho Palos Verdes, CA*

STANFORD UNIVERSITY BUILDING AND CIRCULATION MAP 1995-96

SCALE (Approx.) 5.7 in. = 1 mile (1 : 11,000)



indicates areas under construction

Make sure to check the actual signs in the lot before you park. The parking designations on this map, along with all our conditions and regulations, are subject to change at any time.

Also note that many lots are signed only at the entrance. In "shared" lots - i.e., those posted "C/East Residences" - you may park with either permit designated.

